

# 卡丽 K A R A T<sup>®</sup>

## 安装说明书 INSTALLATION INSTRUCTIONS

CITRINE IN-WALL BATH & SHOWER  
TRIM & VALVE, 3 WAYS  
思琴入墙式浴缸花洒  
阀芯及面板, 三路出水  
20529T-CP

### BEFORE YOU BEGIN

Please read these instruction carefully familiarize yourself with the required tools, materials, and installation sequences. Follow the sections that pertain to your particular installation. This will help you avoid costly mistakes. In addition to proper installation, read all operating and safety instructions.

All information in these instructions is based upon the latest product information available at the time of publication. Karat reserves the right to make changes in product characteristics, packaging, or availability at any time without notice.

These instructions contain important care, cleaning, and warranty information, **please leave instructions for the consumer**

#### NOTES:

This product had been checked and adjusted by factory, please don't take it apart by yourself.  
work pressure: 0.05Mpa~0.7Mpa.  
please keep yourselves safe when you drill and install our product.

### 安装之前

请仔细阅读说明书, 熟悉所需工具、材料和安装顺序, 参照相关章节完成您所需的安装, 以避免昂贵的损失, 除了正确的安装外, 请详阅所有的操作和安全说明。

本说明书所含的一切资料均以印刷时所有的最新产品为准, 卡丽公司保留权利随时更改产品特性、包装或供应情况, 恕不另行通知。

本说明书也包含了有关保养、清洁及产品担保等重要信息- 请交予用户保存。

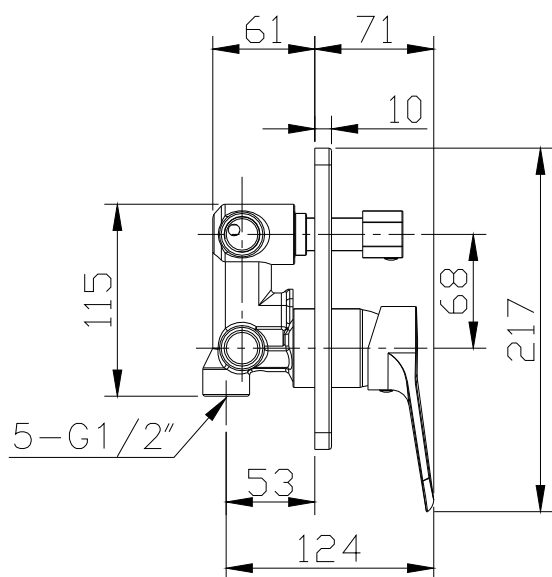
#### 注意事项:

本产品已经出厂检测机调试, 请勿自行拆卸。

工作压力: 0.05Mpa~0.7Mpa。  
当您在钻孔及安装时, 请注意安全。

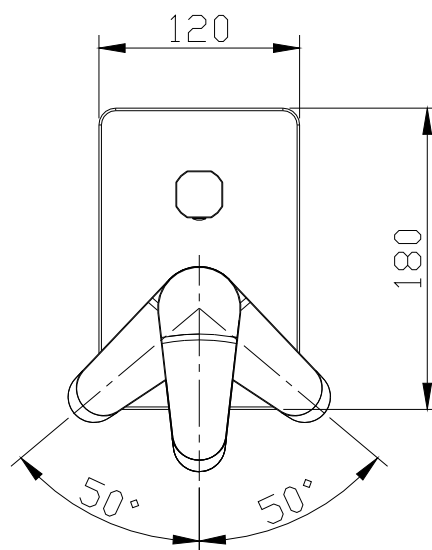
### ROUGHING-IN

Unit:mm



### 尺寸图

单位: 毫米



## INSTALLATION

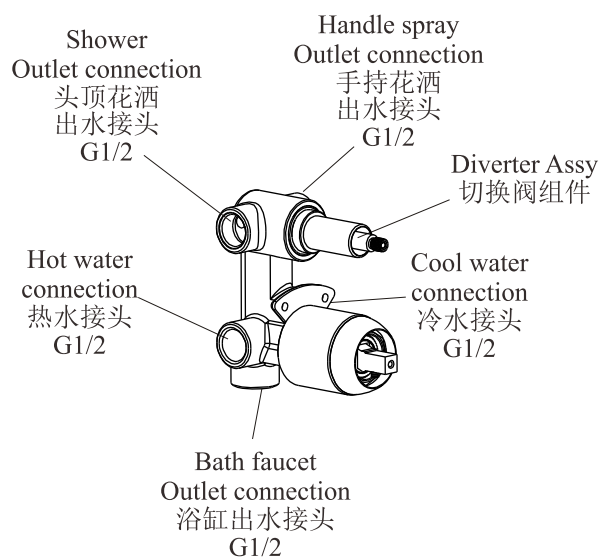
Frist please ensure that your reserved installation position is compatible with this product.

Connect the base body with cold/hot-water inlet pipes, bath faucet outlet pipe or shower outlet pipe,(as shown in service parts and adapter sketch map. The upside is shower outlet pipe connection or bath faucet outlet pipe connection, the two connections next to the bath faucet connection are cold/hot water outlet pipe connections respectively ,whose directions are in compliance with the red/blue marks on the handle)

Connect shower or bath faucet.

Fix outlet screws, the base body and inlet hose. Don't use sealant with enhanced contractility to prevent product damage

Connect the supply pipe.



### NOTE:

Decorative plates are all just fixed to finished wall, And their back side is tightly connected with the wall.

After connection, the choice of hot/cool water should follow the red /blue mark. the blue position means cold water, while the red position means hot water.

## 安装

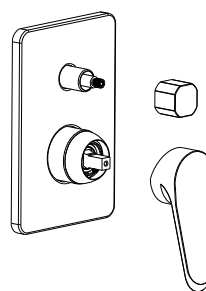
请首先确认您预留的安装位置可以和本产品匹配。

将本体和冷，热水进水管，浴缸龙头出水管或花洒出水管连接好（如爆炸图和接头示意图所示，最上侧为头顶花洒和手持花洒出水接头，下端为浴缸龙头出水管接头，相邻的两个接头为分别连接冷热水进水管接头。冷热水接头方向和把手上的红蓝标记相同）置于墙内并确定尺寸。

连接花洒和浴缸龙头。

固定出水口螺丝，本体和输水软管不能采用强收缩性的密封胶，以防造成产品损坏。

连接进水管。



### 注意:

装饰板恰好全部在安装好的墙面以外，且背面和墙紧密接触。

连接后，冷热水的选择需要和把手上的红蓝标记相符合，向蓝色转到为冷水，向红色转动为热水。

## INSTALLATION CHECKOUT


Ensure that all coupling nuts are tight. Ensure that the lever handle is in the close position. Turn on the main water supply, and check for leaks. Repair as needed.


## 安装后检查


确保所有衔接螺母都已拧紧，确保手柄处在关闭的位置，开启主水源，检查是否有漏水，如有请重新拧紧。

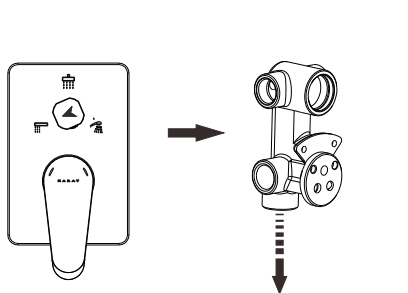
## HANDLE OPERATION

Turn the handle from right to left gently up for hot water, from left to right gently up down for cool water.

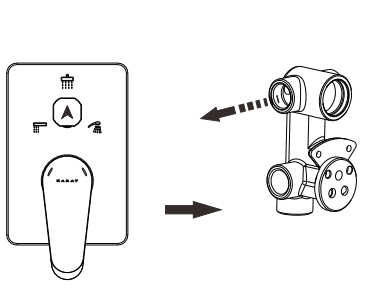
When the switch handle points to left icon,  the water comes out from the bathtub faucet.

When the switch handle points to top icon,  the water comes out from the top shower head.

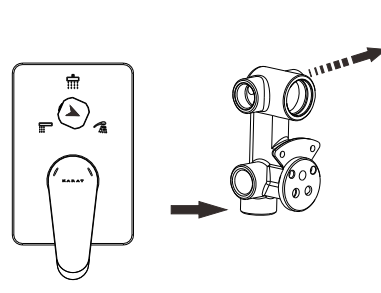
When the switch handle points to right icon,  the water comes out from the handle spray.



下出水



头顶花洒出水



手持花洒出水

## 使用说明

将手柄向右轻轻抬起，向右为冷水，向左为热水。

当切换阀箭头指向左边  时，浴缸出水嘴出水

当切换阀箭头指向上面  时，头顶花洒出水

当切换阀箭头指向右边  时，手持花洒出水

## CLEANING INSTRUCTIONS

All finishes : clean the finish with a mild soap and warm water. wipe entire surface completely dry with a clean soft cloth. Many cleaners may contain chemicals , such as ammonia chlorine, toilet cleaner etc., Which could adversely affect the finish and are not recommended for cleaning.

Don't use abrasive cleaner or solvents on karat faucets and fitting.

## 清理说明

适用于所有加工处理过的表面：

以中性肥皂水清洗镀层表面，再以干净的软布彻底擦干整个表面。许多清洁剂，比如氨水、去污粉及洁厕灵等，会对电镀表面造成伤害，切勿使用。

有腐蚀性的清洁剂或溶剂不可使用于卡丽的水龙头及其附件上。

## FIVE -YEARS WARRANTY

Our company provides five years warranty for its faucets valve to be leak and drip free during normal residential use. We also warrant all other aspects of its faucets to be free of defects of material and workmanship during normal residential use for one year. Our company will be responsible any problems caused by manufacturing defects provided with the invoice. Our company will, at its election ,repair ,replace or make appropriate adjustment where our company inspection discloses any such defects occurring in normal usage within warranty.

The warranty, including products, is limited clearly. Our company is not responsible for other damages appeared after the warranty. Also, the warranty does not cover problems arising from labor charges, incorrect use and installation.

Shanghai Kohler International Trade Co., Ltd.

Address: Room 324, 2 Xinlin Rd,

Waigaoqiao Free Trade Zone, Shanghai

Tel: 021-26062000

Postcode: 200131

## 五年有限担保

本产品自购买之日起，在正常使用下任何由阀芯造成的龙头滴漏现象，我司将提供长达五年的质量担保，同时对正常使用下的龙头制造和质料上的瑕疵提供一年的质量担保。在质保期内，凭购货发票，我司将免费承担由制造质量引起的任何问题。经核查后，我司有权决定是修理、更改、还是做适当的调整。

这里的担保，包括产品都已明确地限制在该担保期内。本公司对以后出现的损坏不负有任何责任。担保也不包括外观损伤，使用不当及未按说明书安装的损失。

上海科勒国际贸易有限公司

地址：上海市,外高桥,保税区,新灵路106号2号楼324室

电话：021-26062000

邮编：200131

# 卡丽 K A R A T<sup>®</sup>

## 维修零件图 SERVICEPARTSPAGE

CITRINE IN-WALL BATH & SHOWER  
TRIM & VALVE, 3 WAYS  
思琴入墙式浴缸花洒  
阀芯及面板，三路出水  
20529T-CP

