

卡丽 K A R A T[®]

安装说明书 INSTALLATION INSTRUCTIONS

派恩/PINE
三孔式缸边龙头
3 HOLE DM BATH FAUCET
26886T-CP

BEFORE YOU BEGIN

- please carefully read this installation instruction in order to ensure proper care and assembly of this accessory.
- Please keep this installation instruction for future reference.



Prior to drilling into walls, check there are no hidden electrical wires, cables or water supply pipes with the aid of ar, electronic detector. If you use power tools do not forget:

1. Wear eye protection.
2. Unplug equipment after use.

安装之前

- 在您安装之前请详细阅读此说明书。
- 请保留此说明书以备参考。

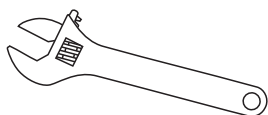


警示：在钻孔之前，请借助电子探测仪确认墙内是否有电源线，通讯光缆或者水管之类的东西。如果使用电钻的话请勿忘记以下两点：

1. 请戴上防护镜。
2. 用完设备后关掉电源。

TOOLS AND ACCESSORIES

工具及配件



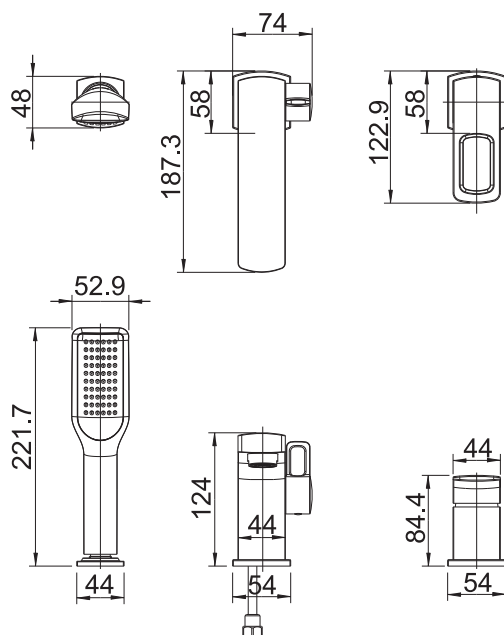
Monkey Spanner
活动扳手

ROUGHING-IN

尺寸图

Reference Value
参考值

Unit: mm
单位: 毫米

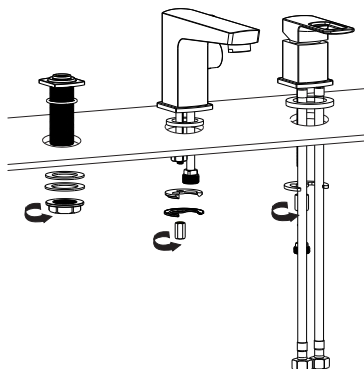


公司保留随时变更图中标示尺寸的权利，无需另行通知。
Our company reserves the right to change marked dimensions without prior notice.

INSTALLATION

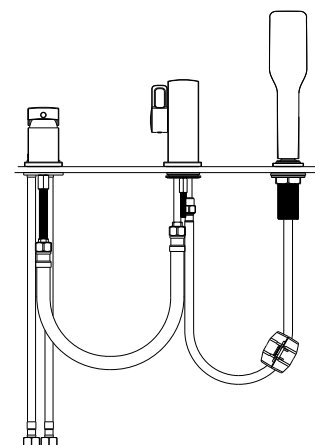
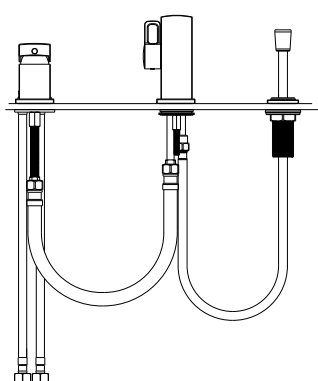
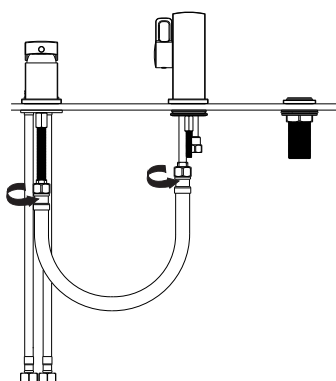
安装

- (1) 3x35mm holes are necessary for the installation.
- (2) Put one rubber gasket into the gap of spout base and set it on one hole, after that put 2 pcs of C-type brackets(one rubber and one stainless steel) under the hole and lock the spout by the thread rod and nut from the bottom.
- (3) Put one rubber gasket into the gap of handle base and install the inlet hose(one red and one blue), then corss the hole and fixed it by a same installation of spout.
- (4) Put O-ring into the shower base and same installation like the spout and handle set.
- (5) Connect the spout and handle set and shower with hoses follow the picture below.



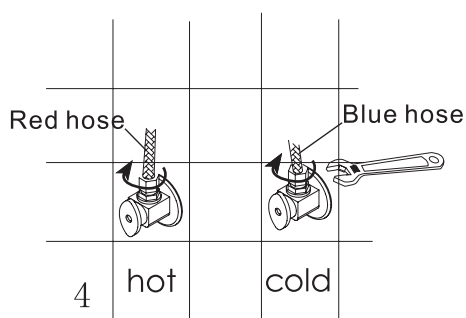
2. Connect the spout and handle set and shower with hoses follow the picture below.

2. 按下面链接图,用软管把出水嘴和把手组连接起来,用花洒软管把出水嘴和花洒连接起来。



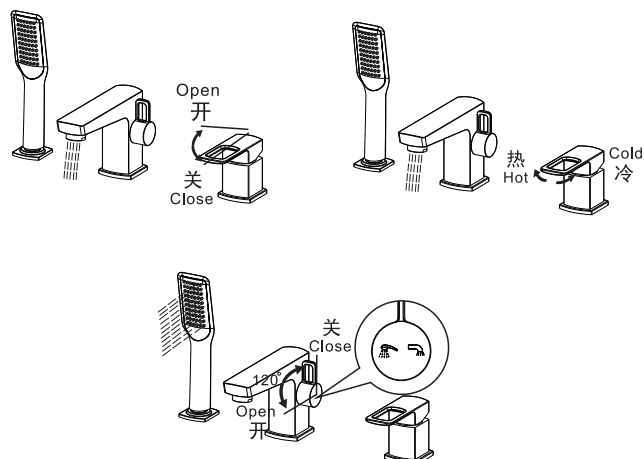
3. Connect the two hoses on the faucet to the water supply pipe, facing the faucet spout, connect hot water to the left (red hose to hot water), and cold water to the right (blue hose to cold water).

3. 将龙头上的两条进水软管连接到供水管道上, 正对龙头出水嘴, 左边接热水(红色进水管接热水), 右边接冷水(蓝色进水管接冷水)。



4. Put up to turn on the faucet and put down to turn off. Turn left for hot water and turn right for cold water. Upward for spout and downward for shower .

4. 把手水平方向往上打是将水龙头打开出水嘴出水, 往下打龙头处于关闭状态, 将把手往左边移动龙头出热水, 往右边移动龙头出冷水. 出水嘴上的切换把手向上手持花洒处理关闭状态, 向前打开手持花洒出水.



CARING FOR YOUR PRODUCTS

1. Clean the product daily with cotton cloth.

Do not use abrasive materials.

2. Do not use strong chemical detergents such as strong acid, strong alkali or phosphoric acid.

3. Avoid scratching product surface with sharp objects.

保养须知

1. 要经常除尘，因为灰尘每天都会粘在产品的表面。最好使用干净的纯棉针织品作为抹布。

切记：请避免使用粗，磨料和钢丝球擦拭。

2. 请勿使用强力化学剂清洁（强酸，强碱或磷酸消毒剂）。

3. 产品均经过表面的打磨和抛光处理，避免有尖锐的硬物刮碰表面。

ONE -YEARS WARRANTY

Our company provides one years warranty for its drain. Our company will at its election, repair, replace or make appropriate adjustment where our company inspection discloses any such defects occurring in normal usage within warranty.

The warranty, including products, is limited clearly. Our company is not responsible for other damages appeared after the warranty. Also, the warranty dose not cover problems arising from labor charges, incorrect use and installation.

一年有限担保

本产品自购买之日起，在正常使用情况下我司将提供一年的质量担保，经核查后，我司有权决定是修理，更改，还是做适当的调整。

这里的担保，包括产品都已明确地限制在该担保期内。本公司对以后出现的损坏不负有任何责任。担保也不包括外观损伤，使用不当及未按说明书安装的损失。

Shanghai Kohler International Trade Co., Ltd.
Address: Room 1348, Floor 13, No.55, Xi Li Road,
China (Shanghai) Pilot Free Trade Zone
Tel: 400-920-8262
Postcode: 201206

上海科勒国际贸易有限公司
地址：中国（上海）自由贸易试验区西里路55号13层
1348部位
电话：400-920-8262
邮编：201206

卡丽 K A R A T®

维修零件图 SERVICEPARTSPAGE

派恩/PINE
三孔式缸边龙头
3 HOLE DM BATH FAUCET
26886T-CP

