

卡丽 K A R A T[®]

安装说明书 INSTALLATION INSTRUCTIONS

SPRINKLE TALL LAVATORY FAUCET SINGLE HOLE

悦霖玄采高把面盆龙头

26881T-CC1

BEFORE YOU BEGIN

• please carefully read this installation instruction in order to ensure proper care and assembly of this accessory.

• Please keep this installation instruction for future reference.

⚠ Prior to drilling into walls, check there are no hidden electrical wires, cables or water supply pipes with the aid of an electronic detector. If you use power tools do not forget:

1. Wear eye protection.
2. Unplug equipment after use.

安装之前

• 在您安装之前请详细阅读此说明书。

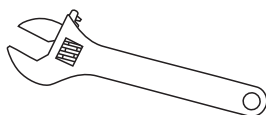
• 请保留此说明书以备参考。

⚠ 警示：在钻孔之前，请借助电子探测仪确认墙内是否有电源线、通讯光缆或者水管之类的东西。如果使用电钻的话请勿忘记以下两点：

1. 请戴上防护镜。
2. 用完设备后关掉电源。

TOOLS AND ACCESSORIES

工具及配件



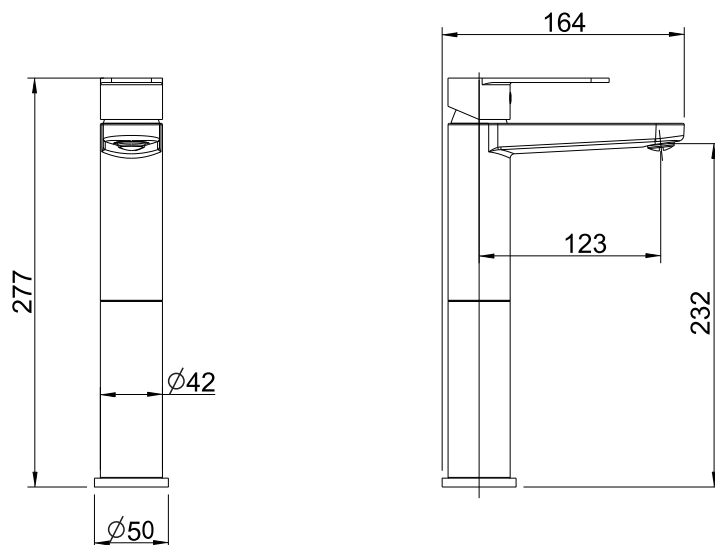
Monkey Spanner
活动扳手

ROUGHING-IN

尺寸图

Reference Value
参考值

Unit: mm
单位: 毫米



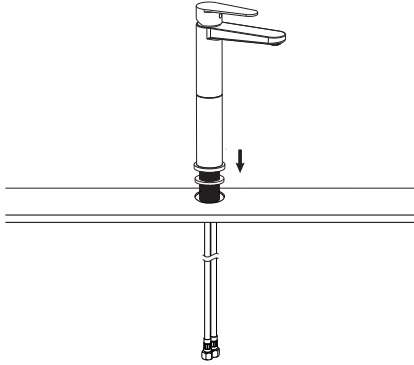
公司保留随时变更图中标示尺寸的权利，无需另行通知。
Our company reserves the right to change marked dimensions without prior notice.

INSTALLATION

安装

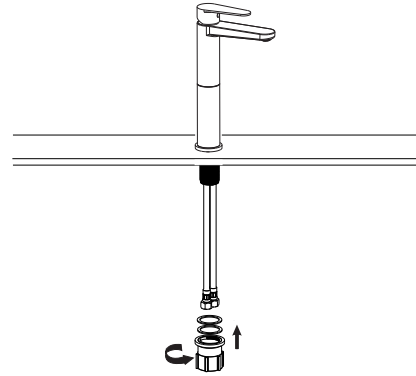
1. A hole between $\varnothing 33$ - $\varnothing 35$ on the deck or sink is necessary for the installation. Put a rubber gasket insert the base and assemble the supply hose with the body, after that through the hole and fix the body.

1. 安装台面需有一个 $\varnothing 33$ - $\varnothing 35$ 的安装孔，将橡胶垫片套入龙头本体底座底部槽内，将两条进水软管装入龙头本体上，再穿过台面安装孔固定好。



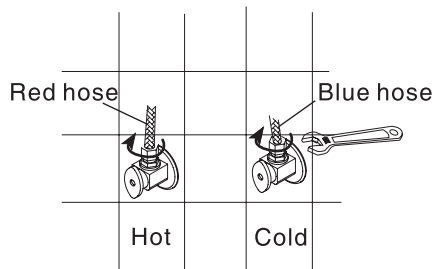
2. Through the hose with Rubber gasket, POM gasket and nut under the deck one by one, screw the nut and lock the body.

2. 把橡胶垫片、POM垫片，锁定牙套依次从台面底部穿过进水软管，锁紧于龙头牙管上。



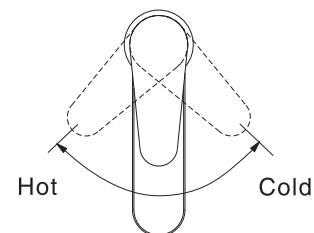
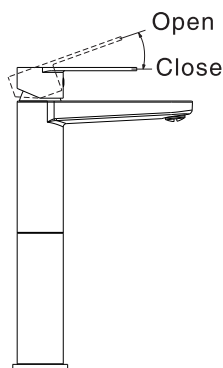
3. Connect the two hoses on the faucet to the water supply pipe, facing the faucet spout, connect hot water to the left (red hose to hot water), and cold water to the right (blue hose to cold water).

3. 将龙头上的两条进水软管连接到供水管道上，正对龙头出水嘴，左边接热水（红色进水管接热水），右边接冷水（蓝色进水管接冷水）。



4. Pull the handle upward in horizontal to turn on the mixer, downward in horizontal line to turn off. Face the spout, move the handle leftward to control hot water and rightward to control cold water.

4. 把手水平方向往上打是将水龙头打开，往下打龙头处于关闭状态，正对着龙头出水嘴，将把手往左边移动龙头出热水，往右边移动龙头出冷水。



CARING FOR YOUR PRODUCTS

1. Clean the product daily with cotton cloth.
Do not use abrasive materials.
2. Do not use strong chemical detergents such as strong acid, strong alkali or phosphoric acid.
3. Avoid scratching product surface with sharp objects.

保养须知

- 1.要经常除尘，因为灰尘每天都会粘在产品表面。最好使用干净的纯棉针织品作为抹布。
切记：请避免使用粗磨料和钢丝球擦拭。
- 2.请勿使用强力化学剂清洁（强酸、强碱或磷酸消毒剂）。
- 3.产品均经过表面的打磨和抛光处理，避免有尖锐的硬物刮碰表面。

FIVE-YEARS WARRANTY

Our company provides five years warranty for its faucets valve to be leak and drip free during normal residential use. We also warrant all other aspects of its faucets to be free of defects of material and workmanship during normal residential use for one year. Our company will be responsible any problems caused by manufacturing defection, repair, replace or make appropriate adjustment when our company inspection discloses any such defects occurring in normal usage within warranty.

The warranty, including products, is limited clearly. Our company is not responsible for other damages appeared after the warranty. Also, the warranty dose not cover problems arising from labor charges, incorrect use and installation.

五年有限担保

本产品自购买之日起，在正常使用下任何由阀芯造成的龙头滴漏现象，我司将提供长达五年的质量担保，同时对正常使用下的龙头制造和质料上的瑕疵提供一年的质量担保。在质保期内，凭购货发票，我司将免费承担由制造质量引起的任何问题。经核查后，我司有权决定是修理、更改、还是做适当的调整。

这里的担保,包括产品都已明确地限制在该担保期内.本公司对以后出现的损坏不负任何责任.担保也不包括外观损伤,使用不当及未按说明书安装造成的损失.

Shanghai Kohler International Trade Co., Ltd.
Address: Room 1348, Floor 13, No.55, Xi Li Road,
China (Shanghai) Pilot Free Trade Zone
Tel: 400-920-8262
Postcode: 200131

上海科勒国际贸易有限公司
地址：中国（上海）自由贸易试验区西里路55号13层1348部位
电话：400-920-8262
邮编：200131

卡丽 K A R A T[®]

安装说明书 INSTALLATION INSTRUCTIONS

SPRINKLE TALL LAVATORY FAUCET SINGLE HOLE

悦霖玄采高把面盆龙头

26881T-CC1

